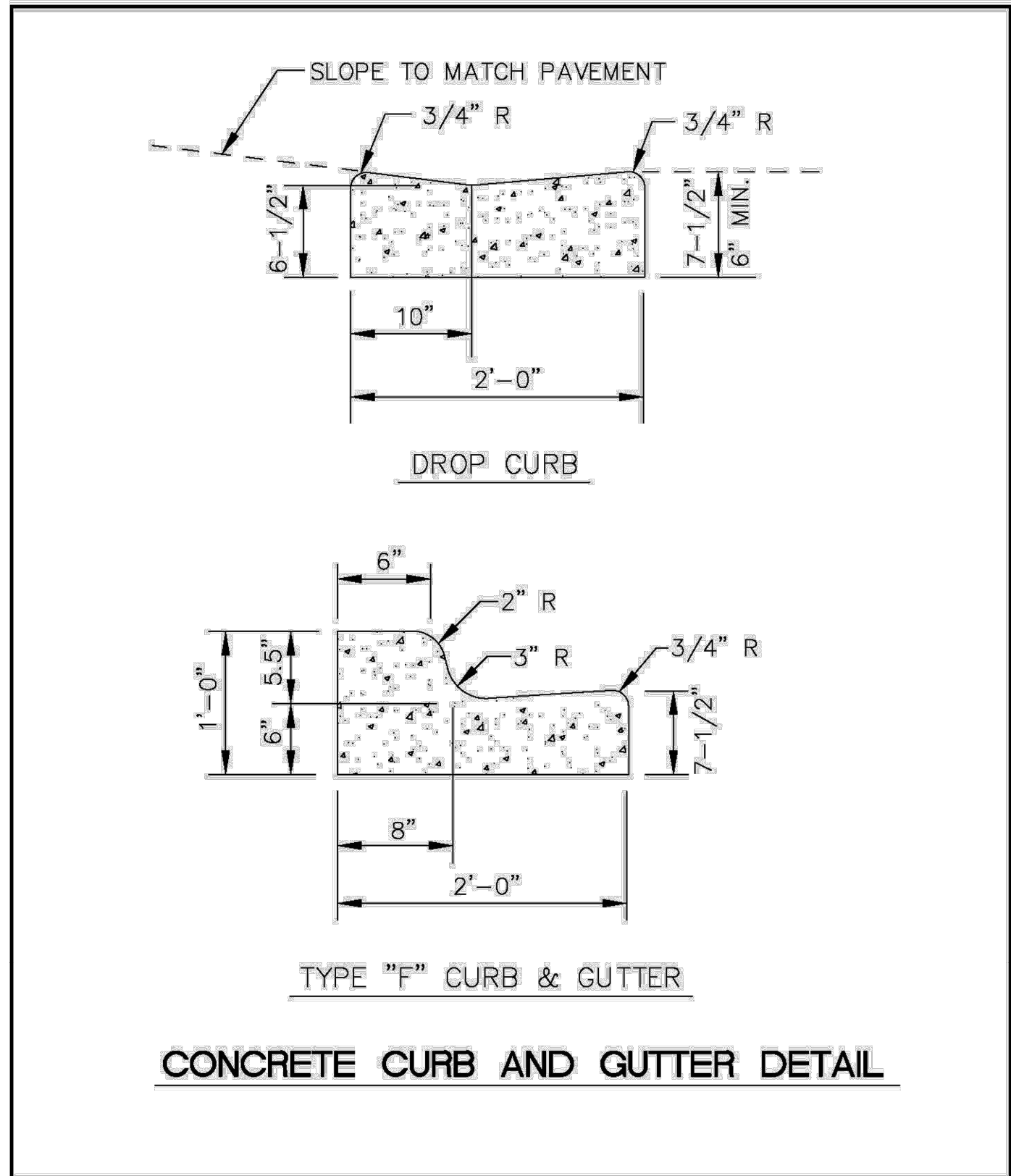
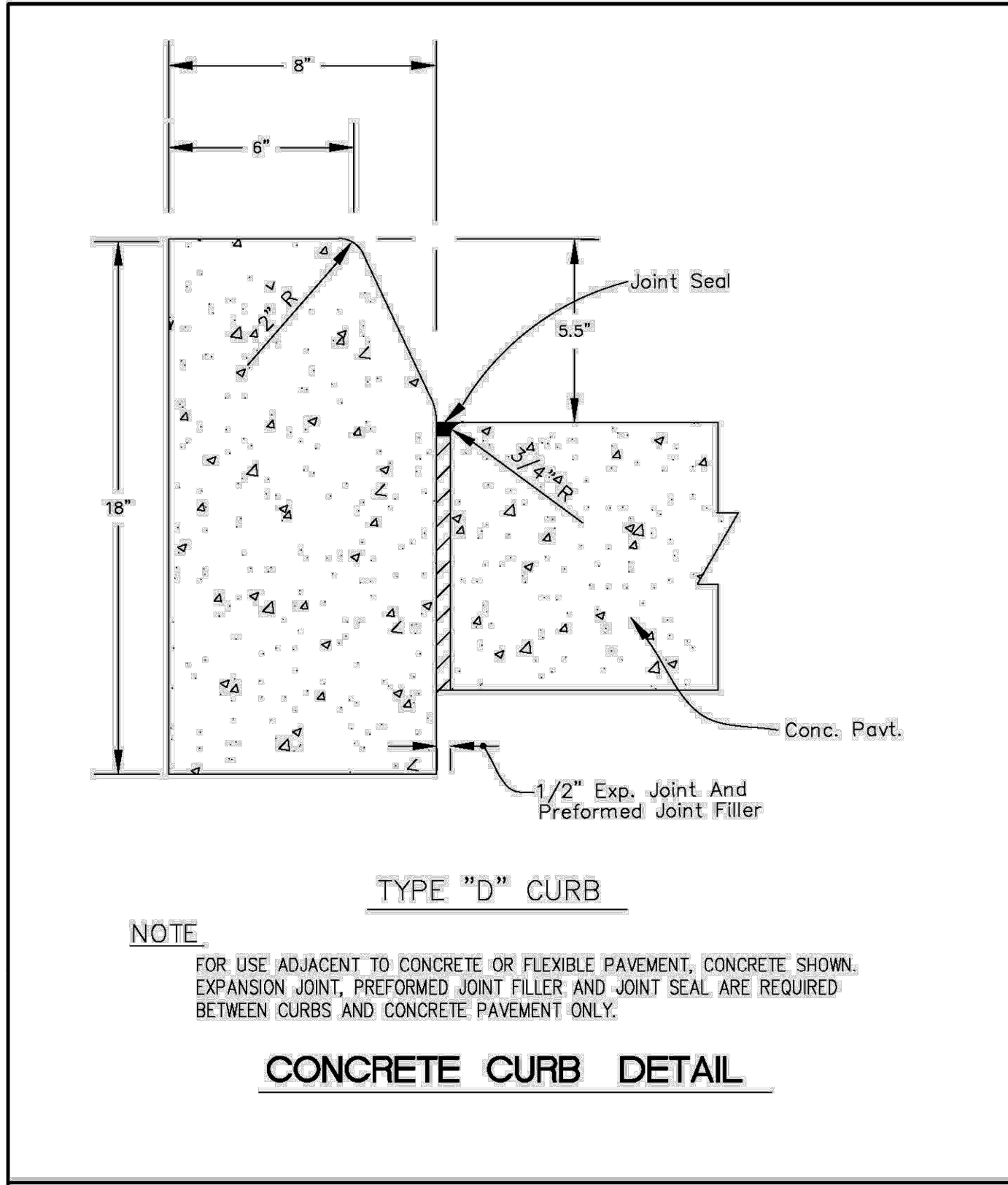


Plotted By: Fernandez, Giovanni Sheet: Set: MILLCREEK, POMPANO Layout: C-303 PAVING GRADING & DRAINAGE DETAILS November 21, 2025 04:02:13pm K:\VTL-Civil\043_pba\04375014_Mill_Creek_Pompano\Design\CADD\PlanSheets\C-PED-BETL.dwg This document, together with the concepts and designs presented herein, as an instrument of service, is intended only for the specific purpose and client for which it was prepared. Reuse of and improper reliance on this document without written authorization and adaptation by Kimley-Horn and Associates, Inc. shall be without liability to Kimley-Horn and Associates, Inc.



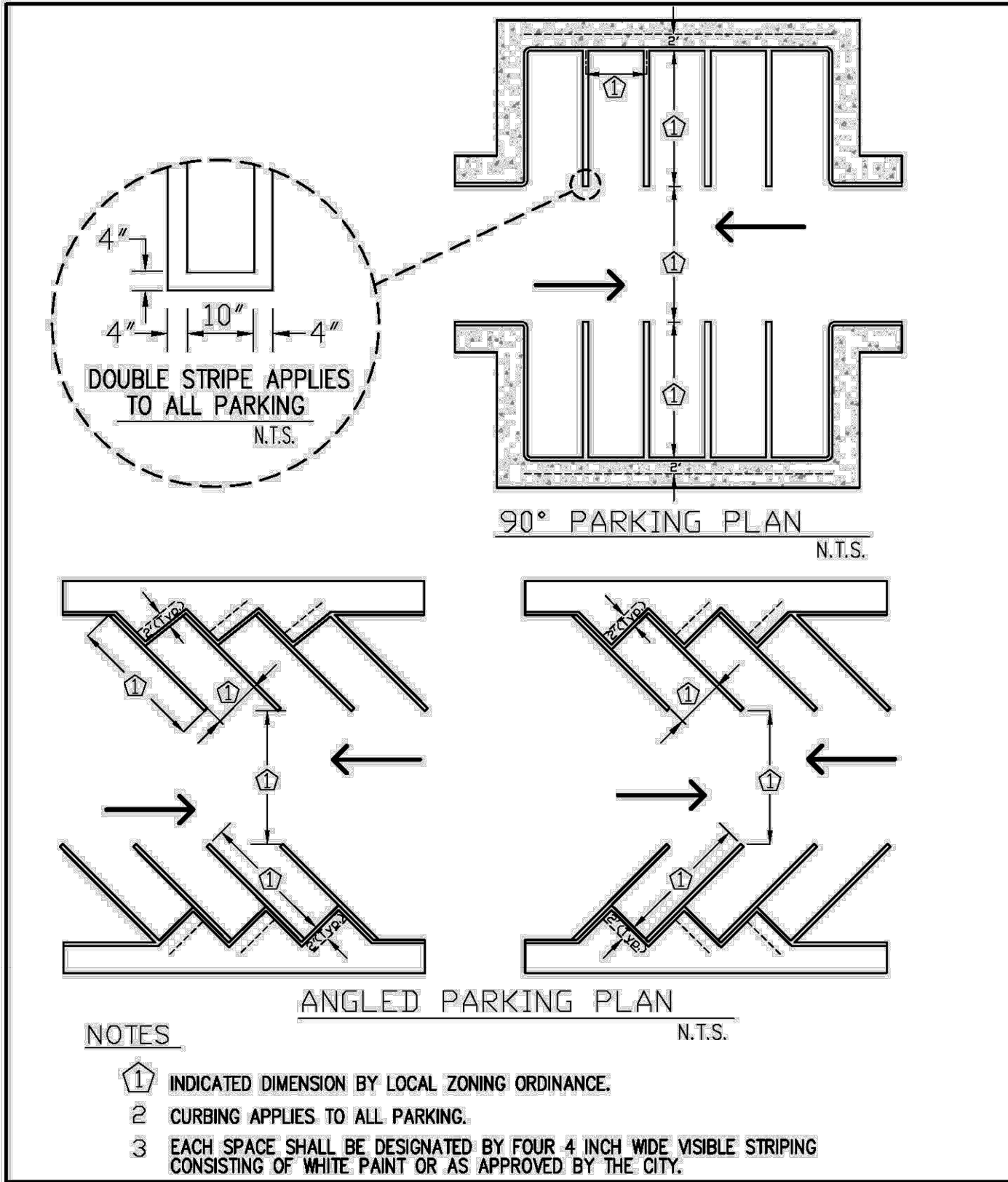
CONCRETE CURB AND GUTTER DETAIL

ENGINEERING STANDARDS 2025			
REVISIONS		ENGINEERING DIVISION	CONCRETE CURB AND GUTTER
BY	DATE		
S.S.	07-2016	CITY OF POMPANO BEACH	DATE: MAY 2022 DWG. NO. 300-1
		SCALE: N.T.S.	



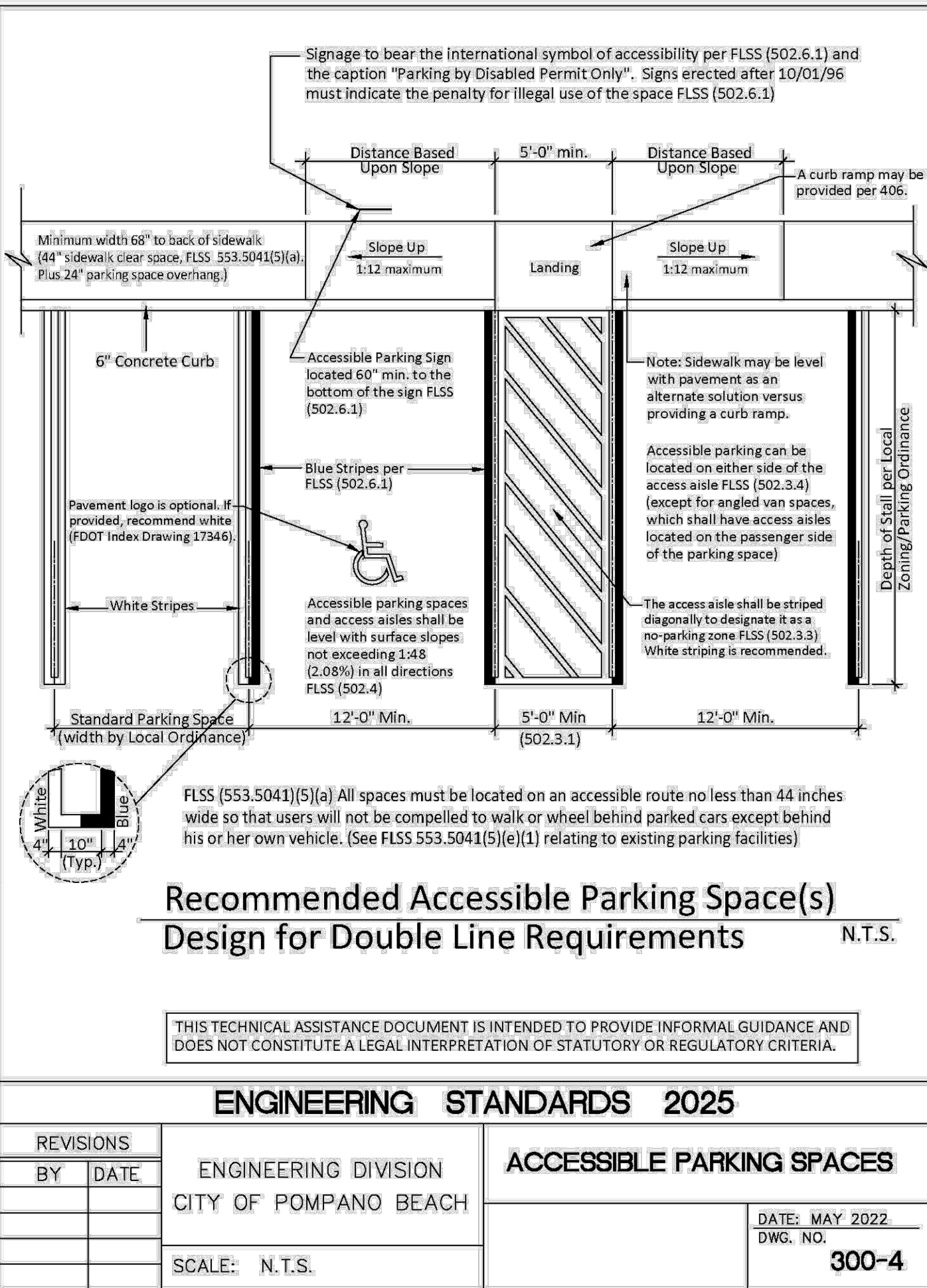
CONCRETE CURB DETAIL

ENGINEERING STANDARDS 2025			
REVISIONS		ENGINEERING DIVISION	CONCRETE CURB
BY	DATE		
S.S.	01-2014	CITY OF POMPANO BEACH	DATE: MAY 2022 DWG. NO. 300-2
S.S.	08-2015		
S.S.	07-2016		
		SCALE: N.T.S.	



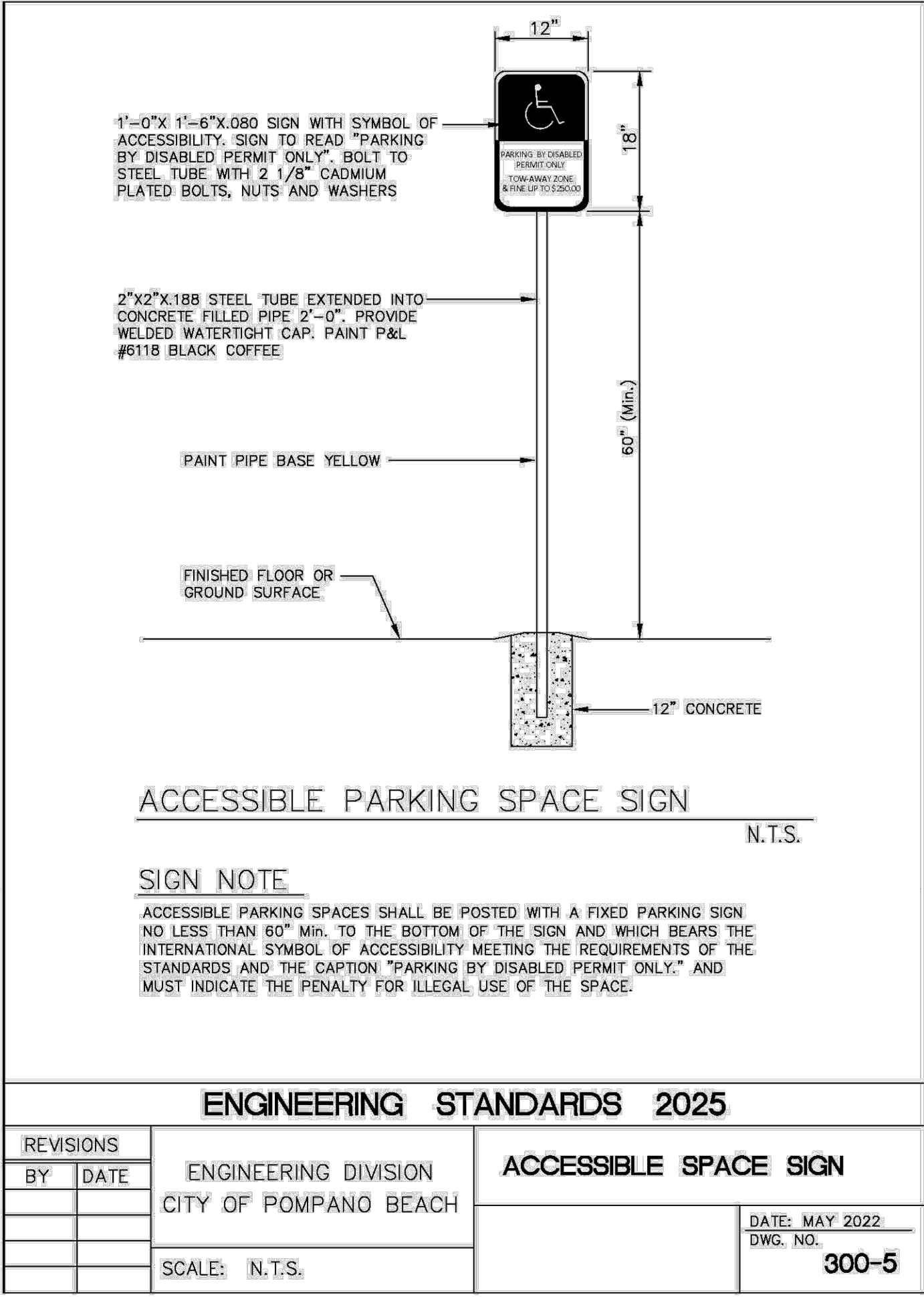
ANGLED PARKING PLAN

ENGINEERING STANDARDS 2025			
REVISIONS		ENGINEERING DIVISION	STANDARD PARKING SPACES
BY	DATE		
		CITY OF POMPANO BEACH	DATE: MAY 2022 DWG. NO. 300-3
		SCALE: N.T.S.	



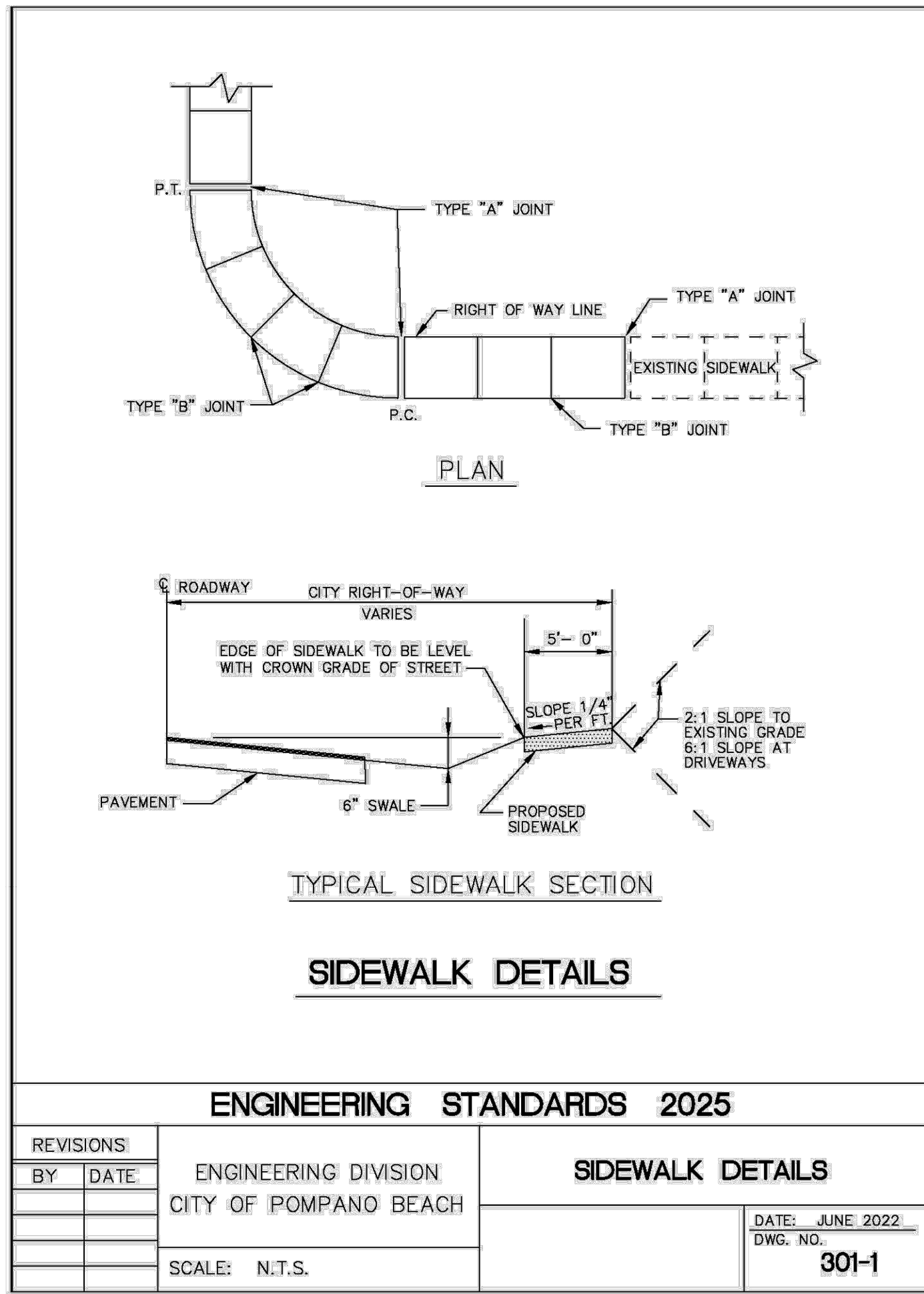
Recommended Accessible Parking Space(s)
Design for Double Line Requirements

ENGINEERING STANDARDS 2025			
REVISIONS		ENGINEERING DIVISION	ACCESSIBLE PARKING SPACES
BY	DATE		
		CITY OF POMPANO BEACH	DATE: MAY 2022 DWG. NO. 300-4
		SCALE: N.T.S.	



ACCESSIBLE PARKING SPACE SIGN

ENGINEERING STANDARDS 2025			
REVISIONS		ENGINEERING DIVISION	ACCESSIBLE SPACE SIGN
BY	DATE		
		CITY OF POMPANO BEACH	DATE: MAY 2022 DWG. NO. 300-5
		SCALE: N.T.S.	



SIDEWALK DETAILS

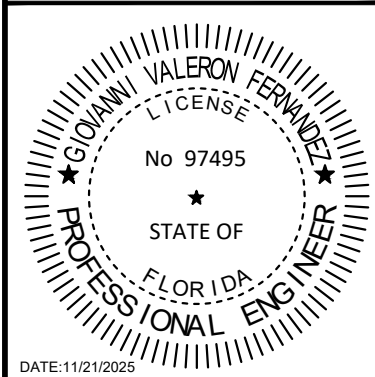
ENGINEERING STANDARDS 2025			
REVISIONS		ENGINEERING DIVISION	SIDEWALK DETAILS
BY	DATE		
		CITY OF POMPANO BEACH	DATE: JUNE 2022 DWG. NO. 301-1
		SCALE: N.T.S.	

DRC

PZ25- 12000028
01/07/2026

Kimley»Horn

© 2025 KIMLEY-HORN AND ASSOCIATES, INC.
8201 PETERS ROAD, SUITE 2200, PLANTATION, FL 33324
PHONE: 954-555-5100 FAX: 954-739-2247
WWW.KIMLEY-HORN.COM REGISTRY No. 35106



KHA PROJECT	043175014
DATE	11/02/2025
SCALE	AS SHOWN
DESIGNED BY	GVF
DRAWN BY	EA
CHECKED BY	GVF

PAVING, GRADING &
DRAINAGE DETAILS

MODERA POMPANO
BEACH
PREPARED FOR
MCRT INVESTMENTS LLC
FLORIDA
POMPANO BEACH

SHEET NUMBER
C-303